

BIWAKO VALLEY GUIDE MAP



THE MAIN

THE BIWAKO TERRACE



Grand Terrace

- A Terrace Café
- B Café Stand

North Terrace

- C Infinity Lounge
- D Café Stand at North Terrace

E Grill Dining & Bar HALUKA

Ropeway Bottom Station

Shop Biwako Street
Ticket Booth



Shop Biwako Street
It offers a variety of souvenirs including original products from The Biwako Terrace and regional ones.

Opening hours
Apr. 26 (Sat) - Nov. 3 (Mon) 8:50 - 17:30

G Zipline Adventure

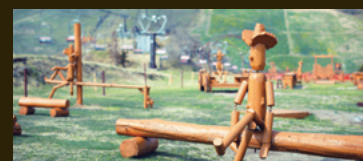


Enjoy an exhilarating adventure, zipping through the forest on a pulley. 6 courses are available.

Opening hours Apr. 26 (Sat) - Nov. 3 (Mon.)
Place of application: Activity reception located on the first floor of ropeway top station.

Fee: ¥4,300
Required time: 120 minutes
Height Limit: ~195cm
Weight Limit: 30kg - 100kg

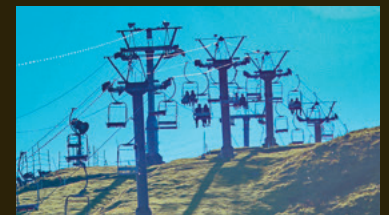
H Playground



Dozens of free playground equipment are available in the lawn area!
Enjoy it with your family or group!

Opening hours: Apr. 26 (Sat) - Nov. 3 (Mon.)

I J Tourist Lift



Admire the majestic view of Lake Biwa from the tall, windy ridges.
Ride the lift to enjoy an elegant midair "stroll."

Opening hours Apr. 26 (Sat) -
Uchimi Lift : 9:30 - 16:30
Horai Lift : 9:30 - 16:15

※Children Under 6 are required to ride with a parent or guardian.
※The operation is subject to change due to the weather conditions.

CAFÉ 360

THE BIWAKO TERRACE



Enjoy the 360° panoramic view from the top of Mount Horai, the highest point in Biwako Valley

Opening hours
Apr. 26 (Sat) - Nov. 3 (Mon.)
10:00 - 16:00
Café 10:00 - 15:30

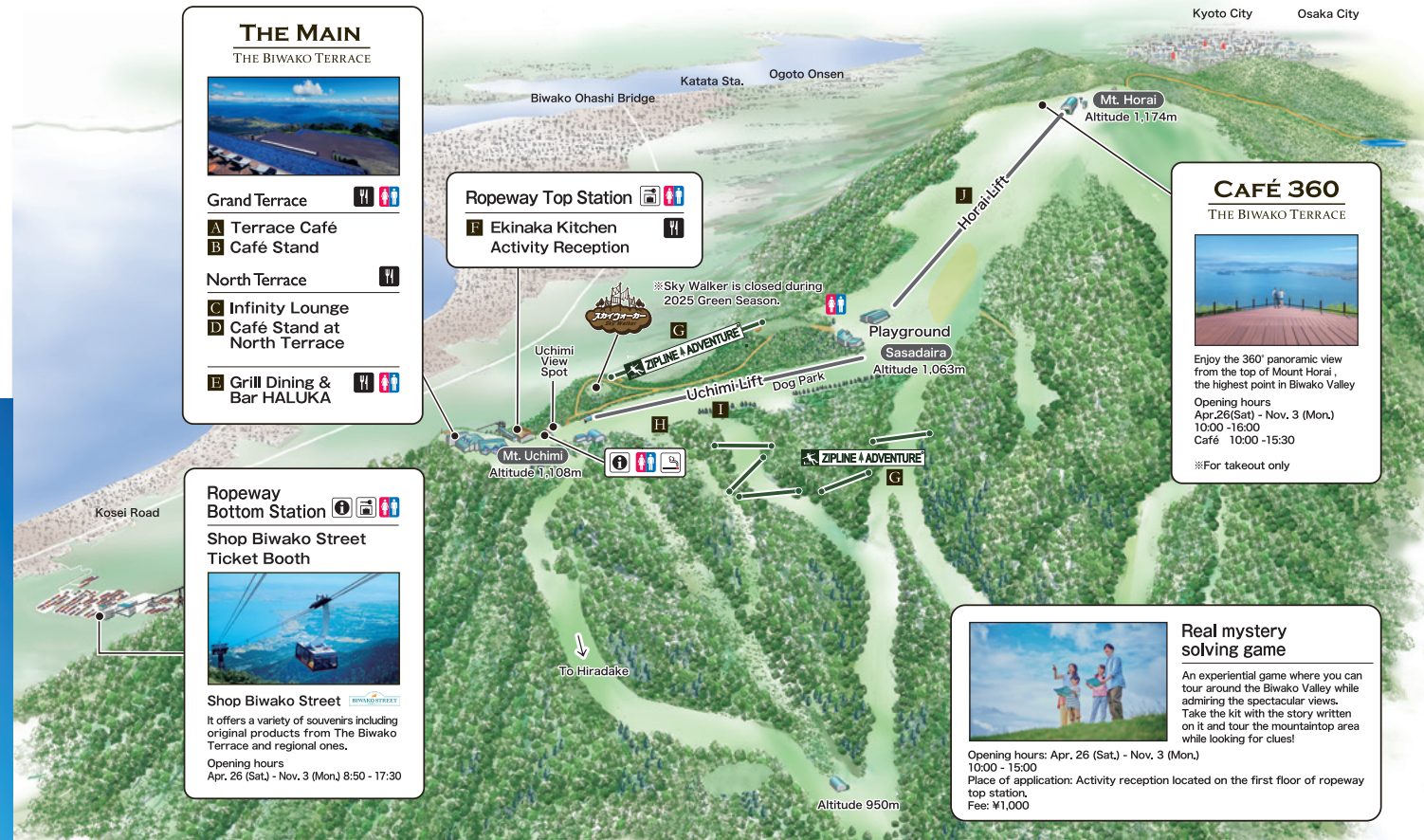
※For takeaway only

Real mystery solving game



An experiential game where you can tour around the Biwako Valley while admiring the spectacular views. Take the kit with the story written on it and tour the mountaintop area while looking for clues!

Opening hours: Apr. 26 (Sat) - Nov. 3 (Mon.)
10:00 - 15:00
Place of application: Activity reception located on the first floor of ropeway top station.
Fee: ¥1,000





B Café Stand Grand Terrace



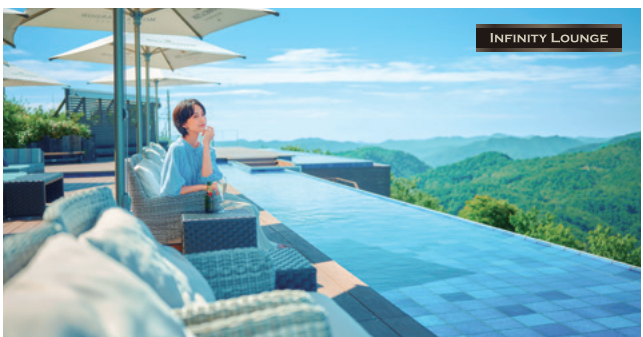
BIWAKO TERRACE Curry Bread

Recommended menu

BIWAKO TERRACE	
Ohmi Wagyu Curry Bread	¥550
BIWAKO TERRACE	
Ohmi Wagyu Curry Bread with Cheese	¥600
Terrace Soda	¥600
Stick Cheesecake	¥700

Opening hours Apr. 26 (Sat.) - Nov. 3 (Mon.) / 10:00 - 16:00

C Infinity Lounge North Terrace



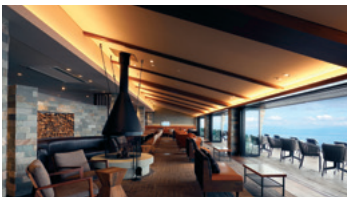
INFINITY LOUNGE

Enjoy Biwako Terrace's best views of Lake Biwa from Infinity Lounge(Charge). Order-made sofa seats are designed in the image of a "blue world" where the surface of the lake and the water basin appear to fuse as one. This is the ideal spot for sipping on a glass of champagne.



Opening hours Apr. 26 (Sat.) - Oct.13 (Mon.)
10:00 - 15:30 (L.O. 15:00)

A Terrace Café Grand Terrace



Tiramisu

Recommended menu

Terrace Plate		Dessert Plate	¥1,300
Beef Stew	¥2,500	Tiramisu	
Alpine Macaroni	¥1,600	Coffee	¥950
Porpetti	¥1,600	Ohmi Matcha	¥950
Clam Chowder	¥1,200	Original Gelato	
Terrace Bread	¥700	Double	¥750
		Single	¥600

Opening hours Apr. 26 (Sat.) - Nov. 3 (Mon.) / 9:10 - 16:00 (L.O. 15:30)

D Café Stand North Terrace



Biwako Black Curry

Recommended menu

Biwako Black Curry	¥1,350
KOKU Soda	¥800
Stick Cheesecake	¥700

Opening hours Apr. 26 (Sat.) - Oct. 26 (Sun.) / 10:00 - 16:00

E Grill Dining & Bar HALUKA



Recommended menu

Ohmi Wagyu Sirloin Steak	¥5,500	Champagne Cocktails :	¥1,700~
Wagyu Fillet Steak	¥4,700	Mocktails :	¥700~
Grilled Pork	¥2,400		

Opening hours Apr. 26 (Sat.) - Nov. 3 (Mon.) / 10:30 - 15:30 (L.O. 15:00)

F Ekinaka Kitchen



Fried Chicken Sandwich



Recommended menu

Fried Chicken Sandwich :	¥1,200
Shrimp Cutlet Sandwich :	¥1,300
French Fries :	¥600

Opening hours Apr. 26 (Sat.) - Nov. 3 (Mon.) / 10:30 - 15:00

THE BIWAKO TERRACE Original

OHMI TEA



Ohmi tea which savor of a rich aroma, flavor and delicate taste.

¥ 860

Financier



Our moist, rich French pastry is prepared only with fermented butter. 5 different flavors are available.

¥ 1,840

BLACK CURRY



Savor this mild curry prepared with aromatic spices and juicy Japanese beef check meat.

¥ 1,180